



# REVEALING PLACES - THE VISUAL JOURNEY

SIGRÚN BIRGISDÓTTIR

ARCHITECT

DEAN OF DEPARTMENT OF DESIGN AND ARCHITECTURE

ICELAND ACADEMY OF THE ARTS

HÖNNUN FERÐAMANNASTAÐA

MÁLÞING UM HÖNNUN FERÐAMANNASTAÐA I NORRÆNA HÚSIÐ

07.06.2013









## 1. APPROACH AND APPEARANCE OF TOWNSCAPES IN ICELAND



## 2. GÁTT - INTERVENTION IN THE LANDSCAPE





## **APPROACH AND APPEARANCE OF 52 TOWNSCAPES IN ICELAND**

### **KRISTÍN ÞORLEIFSDÓTTIR**

Ph.D. in Environmental and Community Design, Landscape Architect

### **SIGRÚN BIRGISDÓTTIR**

Architect and Dean of Department of Design and Architecture at Iceland Academy of the Arts

### **STEINUNN ARNARDÓTTIR AND BÚI HRAFN JÓNUSON**

Students in BA Architecture at Iceland Academy of the Arts



Hella







Blue sign with white text, possibly a brand name or logo.



Sign on the building with the text 'HÖLUGALAN' and 'HOTEL'.



Sign with the text 'OB' and 'HOTEL'.





## **THE AIM OF THE RESEARCH**

### **GENERAL AIM**

- TO HIGHLIGHT THE NEED TO IMPROVE PROCESSES OF DESIGN AND PLANNING
- TO EMPHASISE THE PARTICULAR UNIQUENESS OF PLACE AND ENVIRONS AND SHOW HOW THE STUDY AND ANALYSIS OF PLACE CAN IMPROVE THE IDENTITY AND ATTRACTIVENESS OF PLACE.

### **CONTRIBUTION TO SCIENCE**

- TO DEVELOP A COMPREHENSIVE METHODOLOGICAL APPROACH TO THE ANALYSIS OF APPEARANCE AND UNIQUENESS OF BUILT ENVIRONMENT.

### **TOOLS FOR APPLICATION**

- TO DEVELOP TOOLS AND GUIDANCE FOR THE ANALYSIS OF APPEARANCE, IDENTITY AND ENVIRONMENTAL CHARACTERISTICS OF SMALLER TOWNS.
- TO PLACE GUIDANCE IN THE CONTEXT OF THE AIMS OF AUTHORITIES.
- TO PLACE GUIDANCE IN THE CONTEXT OF ASSESSMENT METHODS FOR SUSTAINABLE DESIGN.
- TO CREATE INTERFACE FOR MANY WHO PARTAKE IN THE DESIGN PROCESS.

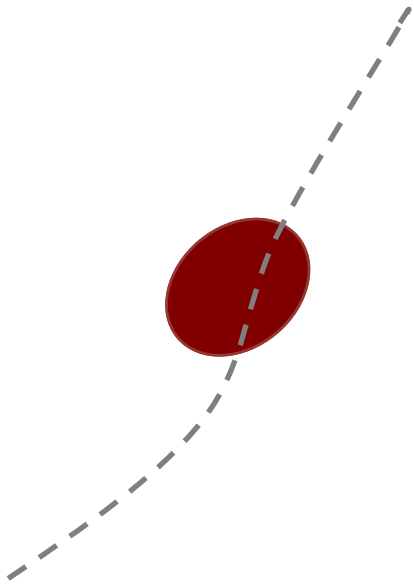


**MATERIAL WAS GATHERED IN EVERY TOWN IN THE FORM OF:**

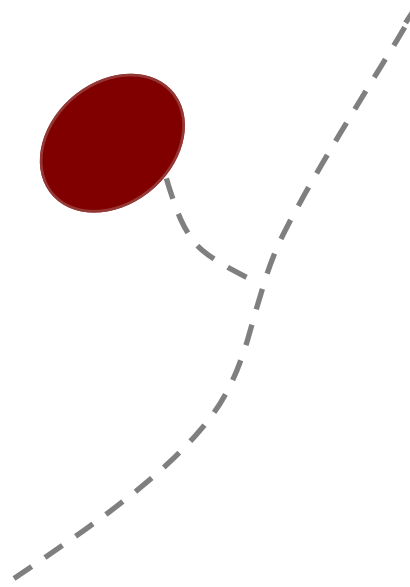
a) THE ARRIVAL TO A TOWN WAS PHOTOGRAPHED

B) CHARACTERISTICS OF PLACE WERE DOCUMENTED IE. SIGHTLINES, RYTHM, FORM AND SHAPE OF URBAN CENTER.

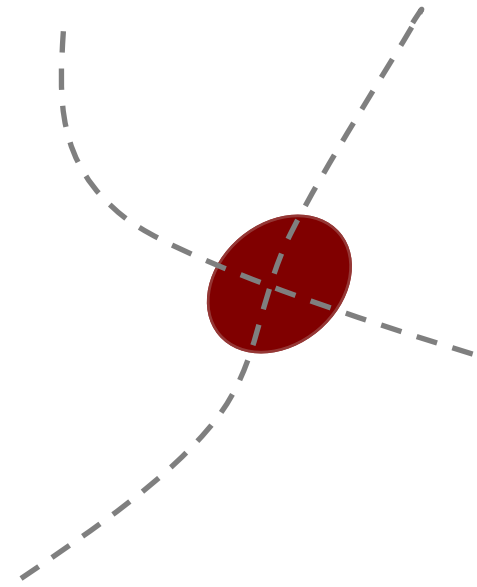
C) INHABITANT AND VISITORS RECEIVED QUESTIONAIRES.



VÍK



HÖFN



FLÚÐIR

### APPROACH

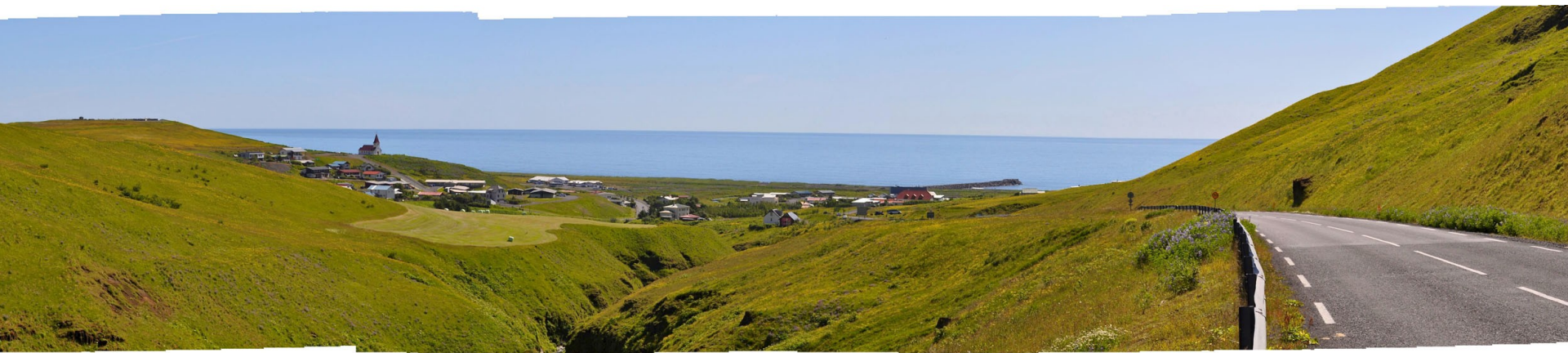
EMPHASIS IS LAID ON THE STUDY OF VISUAL IMPRESSION OF ENTRY INTO TOWN.

- THE RELATIONSHIP OF TOWN TO NATIONAL ROUTE IS DETERMINED



THE APPROACH TO TOWNS ARE PHOTOGRAPHED AT A DEFINED DISTANCE OG IDENTIFIED AS LANDSCAPE, APPROACH AND ENTRY.

**LANDSCAPE**  
**APPROACH**  
**ENTRY**



## LANDSCAPE

VÍK



FJARSÝN

**APPROACH**

VÍK



**ENTRY**

VÍK





**LANDSCAPE**

VÍK



## APPROACH

VÍK



ENTRY

VÍK



**ELEMENTS**

VÍK



**ELEMENTS**

VÍK



**ELEMENTS**

FIGHT OF THE SIGNS



ELEMENTS

FIGHT OF THE SIGNS



ELEMENTS

FIGHT OF THE SIGNS



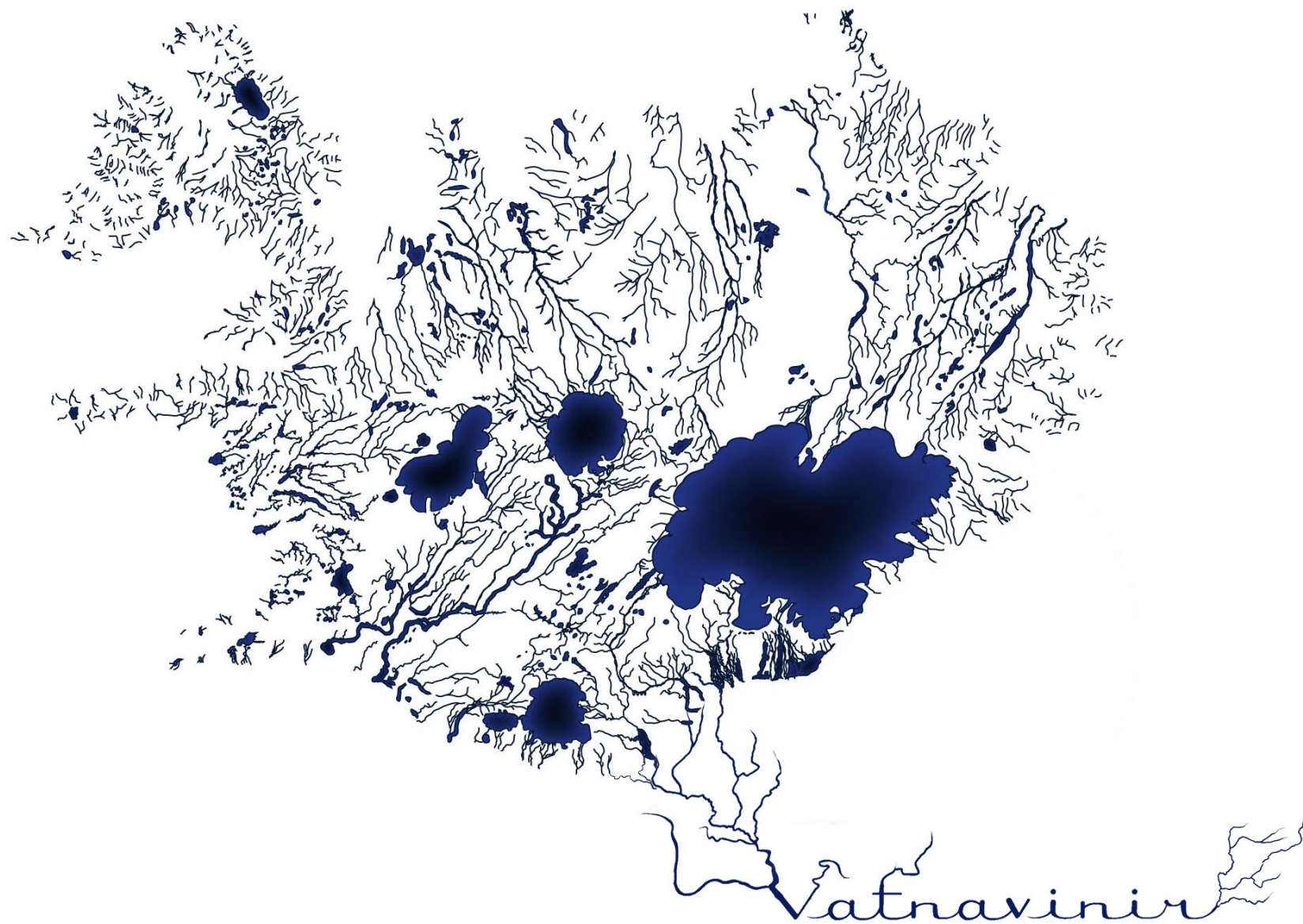


WWW.SWEDEN-LINE.COM  
BLUE WAY



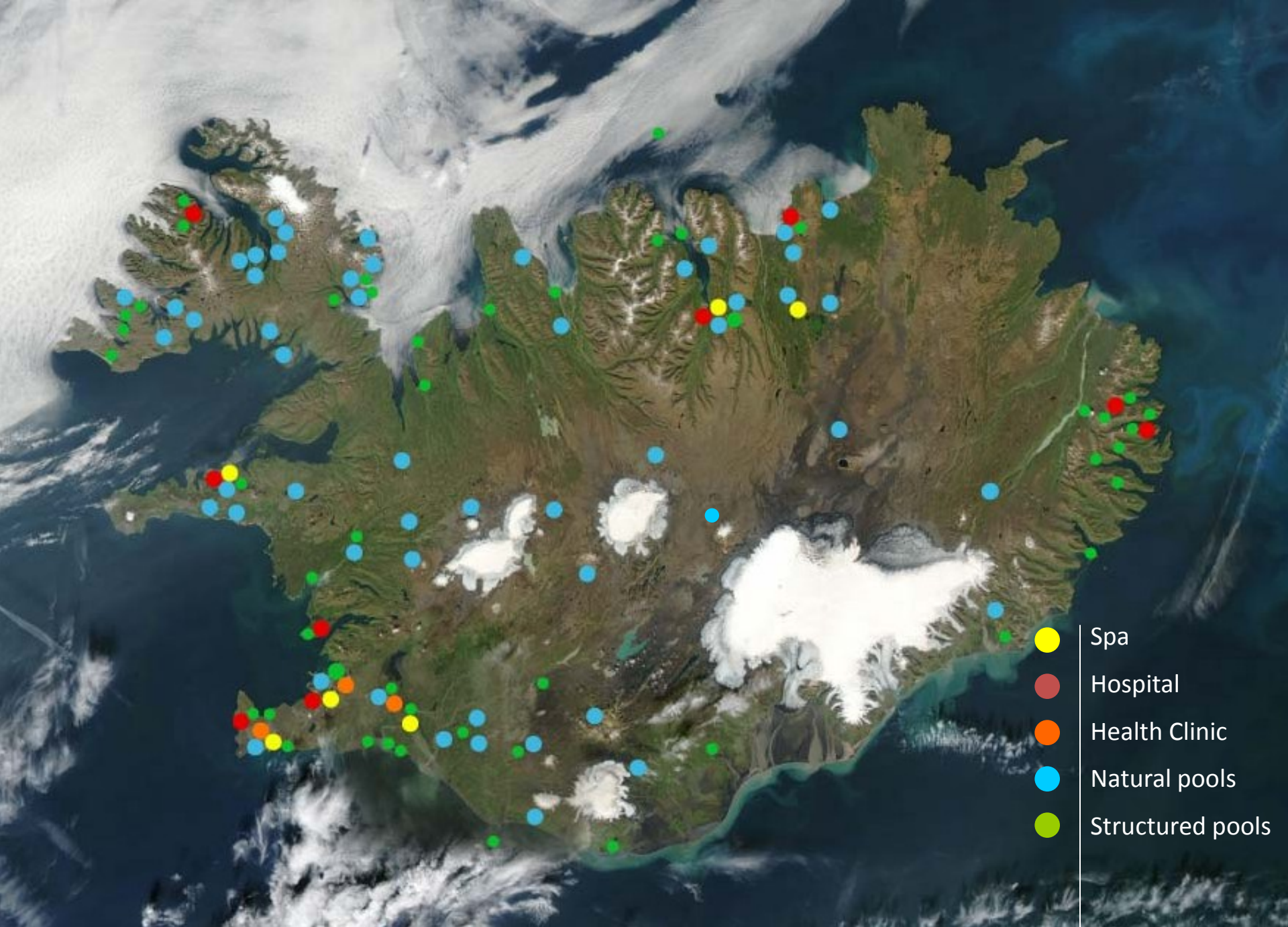
**GÁTT** - INTERVENTION IN THE LANDSCAPE

WITH DAGUR EGGERTSSON, [RINTALAEGGERTSSON.COM](http://RINTALAEGGERTSSON.COM)

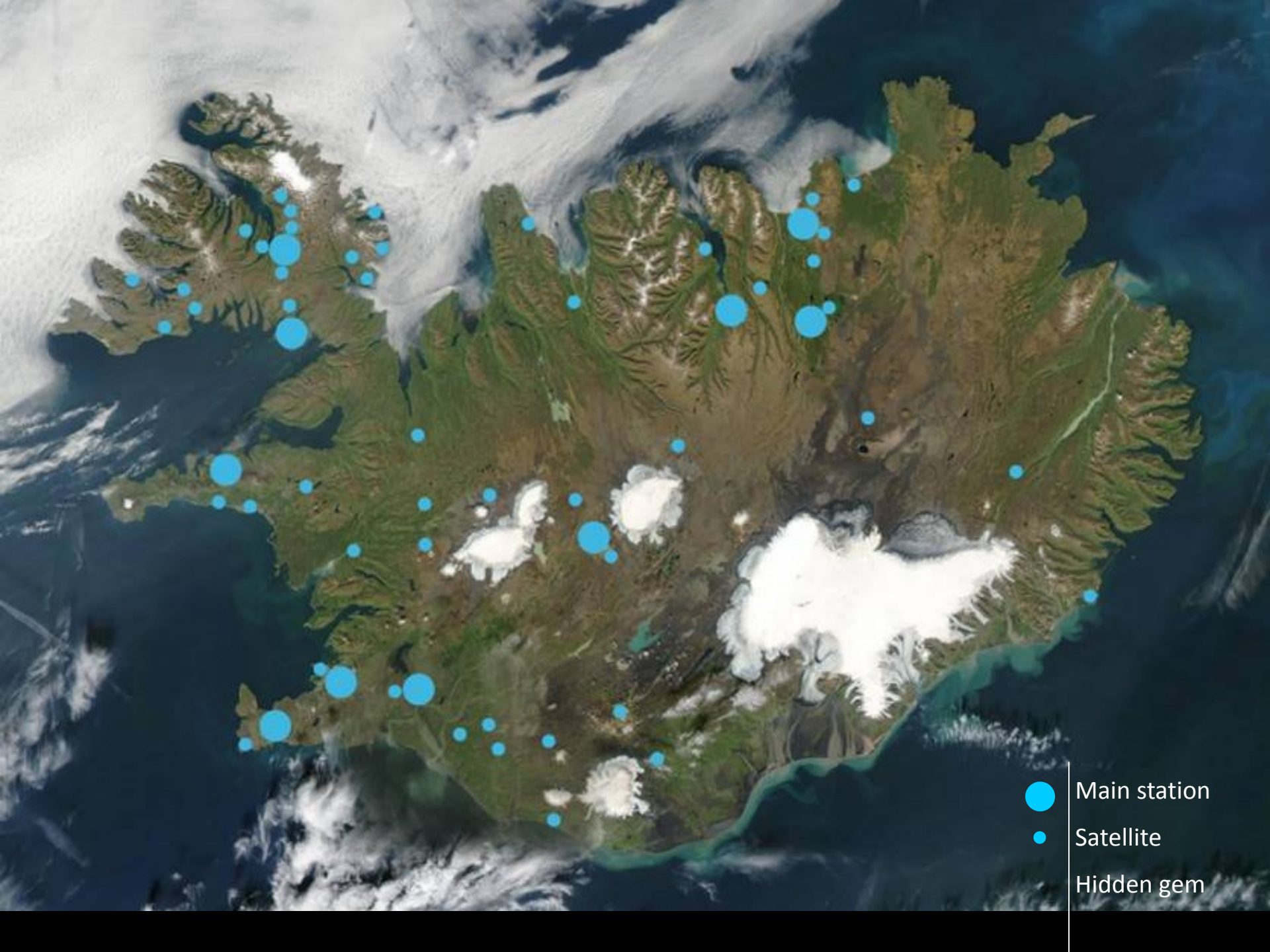


Vatnavinnir

*friends of water*



- Spa
- Hospital
- Health Clinic
- Natural pools
- Structured pools



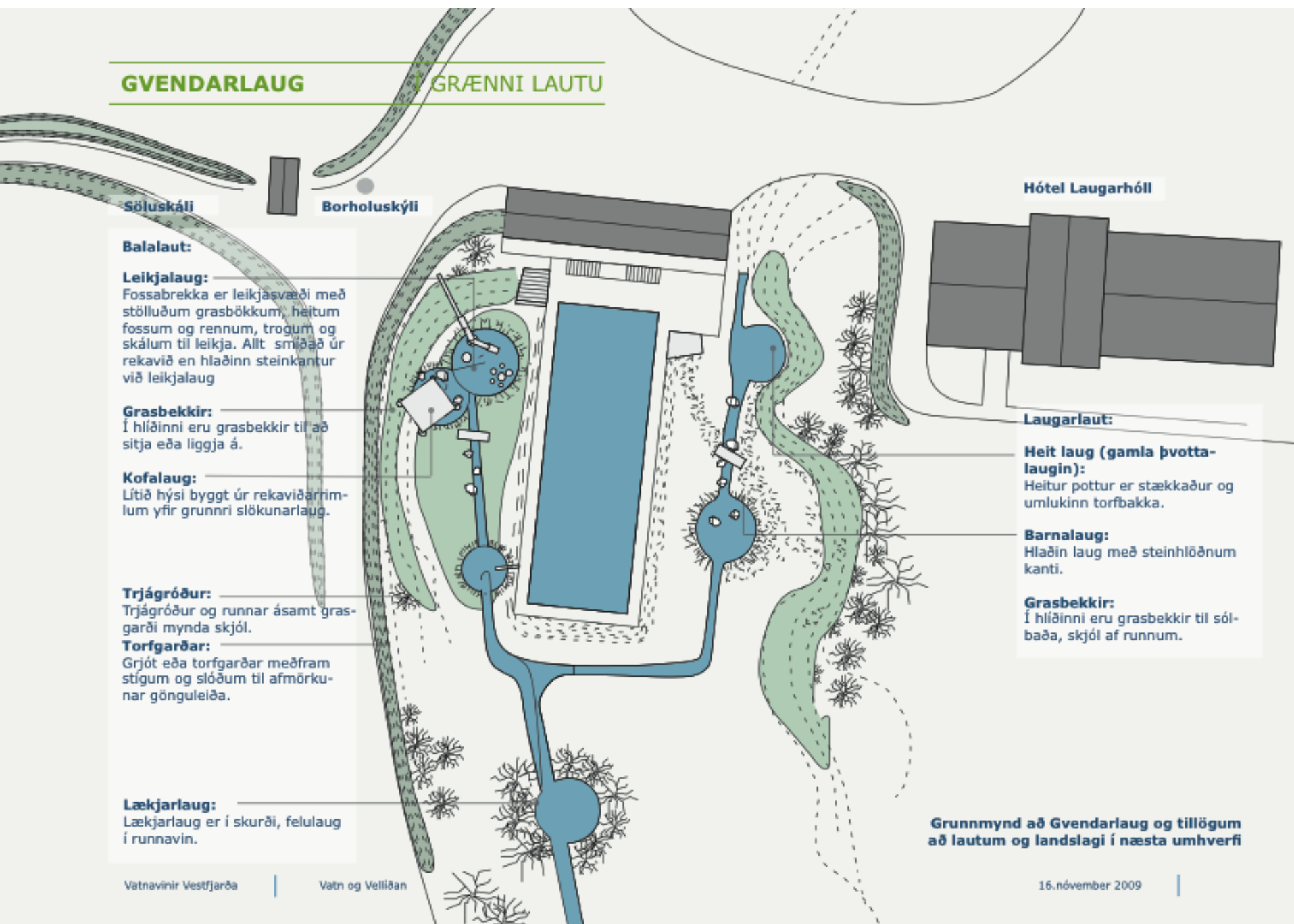
- Main station
- Satellite
- Hidden gem





## GVENDARLAUG

## GRÆNNI LAUTU



Söluskáli

Borholuskýli

Hótel Laugarhóll

### Balalaut:

#### Leikjalaug:

Fossabrekka er leikjásvæði með stölluðum grasbökkum, heitum fossum og rennum, trogum og skálum til leikja. Allt smíðað úr rekavið en hlaðinn steinkantur við leikjalaug

#### Grasbekkir:

Í hliðinni eru grasbekkir til að sitja eða liggja á.

#### Kofalaug:

Lítið hýsi byggt úr rekaviðarrim-lum yfir grunnri slökunarlaug.

#### Trjágróður:

Trjágróður og runnar ásamt gras-garði mynda skjól.

#### Torfgarðar:

Grjót eða torfgarðar meðfram stígum og slóðum til afmörku-nar gönguleiða.

#### Lækjarlaug:

Lækjarlaug er í skurði, felulaug í runnavin.

### Laugarlaug:

#### Heit laug (gamla þvotta-laugin):

Heitur pottur er stækkaður og umlukinn torfbakka.

#### Barnalaug:

Hlaðin laug með steinhlöðnum kanti.

#### Grasbekkir:

Í hliðinni eru grasbekkir til sól-baða, skjól af runnum.

**Grunnmynd að Gvendarlaug og tillögum að lautum og landslagi í næsta umhverfi**











THANK YOU



