

CONNECTION THROUGH THE WATER LANDSCAPE



7.6.2013 Arto Kaituri, MARK, WSP Finland

Competition about connection through
the water landscape in Helsinki,
www.kruunusillat.fi

New bridges will connect the city center and the
zoo and a new eastern district

Background

Helsinki is growing fast for the next decades



Residential areas will be built at the seaside

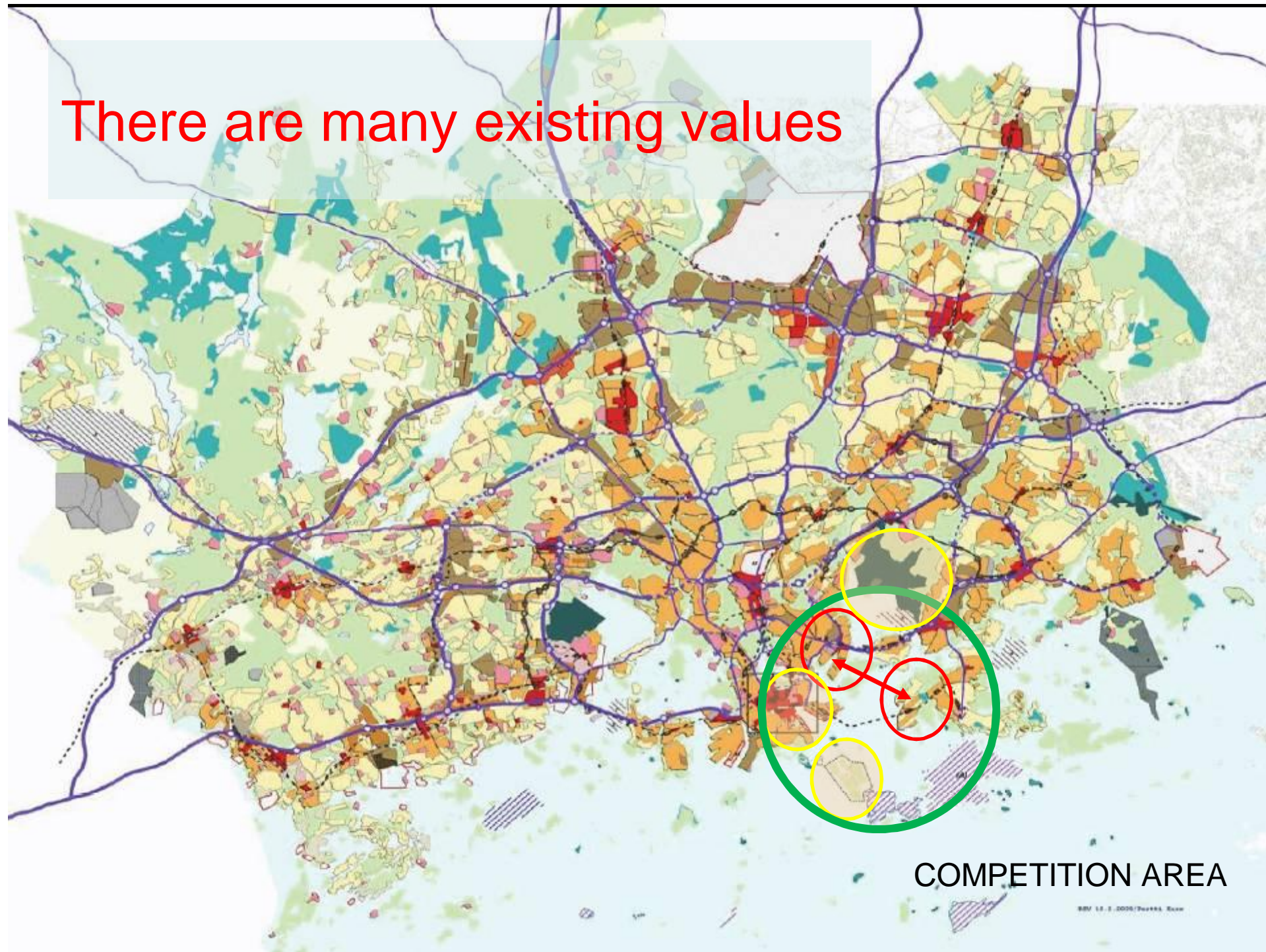


COMPETITION AREA

Especially the coastal areas are changing



There are many existing values



COMPETITION AREA

Historical monuments and nature protection area are part of the competition area



Suomenlinna fortress in the southern edge of the sea from the 1750. It is on **the Unesco World heritage** list. It has been declared **nationally significant landscape area**.

Viikki nature protection area.

Kaivopuisto landscape park from the late 1800.



Bridge competition is going on - www.kruunusillat.fi



The City of Helsinki is organizing an international design competition for Kruunusillat.

At the end they have got eleven entries. The jury is still working.

The competition area covers the connection between **Kalasatama** and **Kruunuvuori**, about 2 km, and two bridges.

Bridge competition - **Kruunuvuorensilta**



The purpose of the competition is to find a high-quality solution for an environment, extremely demanding from the **landscape** and **cultural-historical** perspectives.



The bridges shall have a positive effect on Helsinki's **image** and shall be a worthy legacy for future.



The bridges are for bicycle and pedestrian traffic and trams.

It is mainly a connection for the inhabitants of eastern district and for the visitors of the zoo.

The solution should be for an environment, extremely demanding from the **landscape** and **cultural-historical** perspectives.



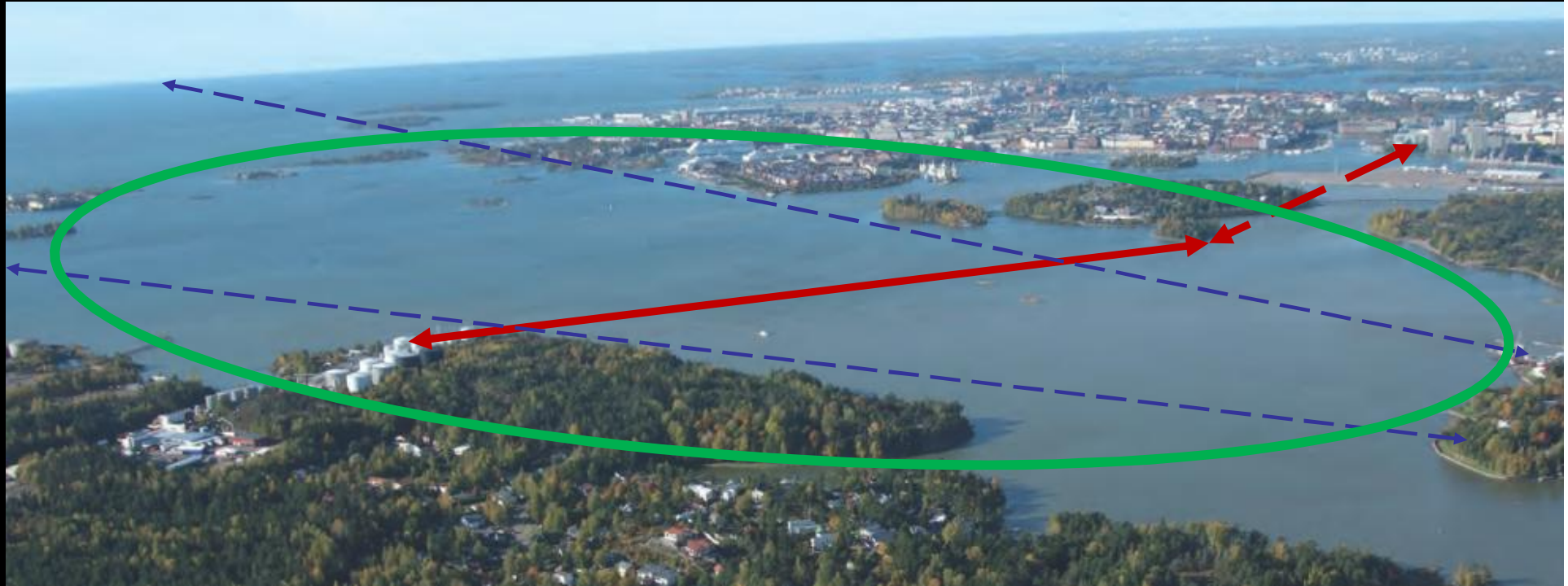
Finland's National Board of Antiquities

”Kruunuvuorenselkä on historiallisesti tärkeä Helsingin merellinen liikenneväylä. Kruunuvuorenrannan joukkoliikenteen toteuttaminen siltojen välityksellä aiheuttaisi merkittäviä maisemallisia muutoksia merellisen Helsingin kansallismaisemaan. **The connection will effect essentially on the national important see landscape.**

Korkeasaaren kansanpuisto on valtakunnallisesti merkittävä kulttuuriympäristö. Sen yhteyteen rakennettava silta vaikuttaisi olennaisesti saaren herkkään maisemaan ja luontoon. **The zoo is an important cultural environment and the connection would have negative impacts on the zoo area.”**



The view to the Baltic see



The existing view from the see



Helsinki skyline is the famous image of the city



The bridge architecture combines...

esthetic values

scale and details

"Genius loci"
spirit of the place

Is all this
enough or too
much for the
landscape?

materials

visual values

history

economical values

symbolic values

technical solutions

(The instruction for the bridge architecture, Finnish Transport Agency)

examples of the entries, *Unda arctica*, more in www.kruunusillat.fi

Landscape and new structures – diverse discussions

New skyscrapers



New hotel (Herzog & Meuron)

oppose projects...



New Helsinki wheel



New bridges



design them suitable for the landscape

Maybe designing is not possible in every case,
anyway the inhabitants and politicians are very keen on the landscape issues

Thank You!



Motorway system through the city of Helsinki, plan 1968, Smith & Polvinen